

# MONTHLY MEMBERSHIP PROGRESS REPORT

LOCATION INDIA

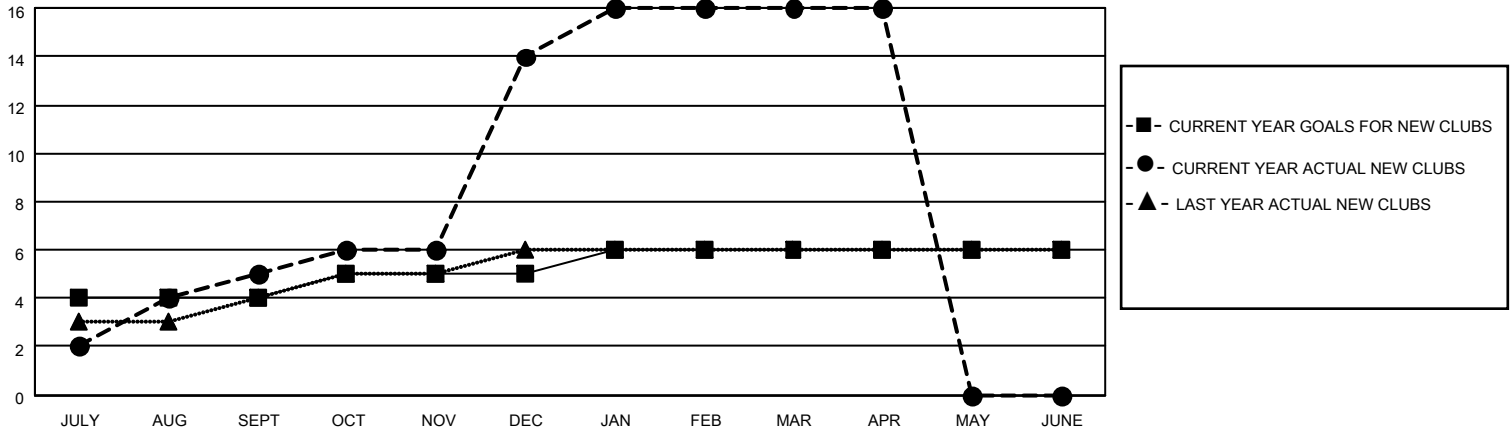
District 3234D2

Results as of: 4/30/2021

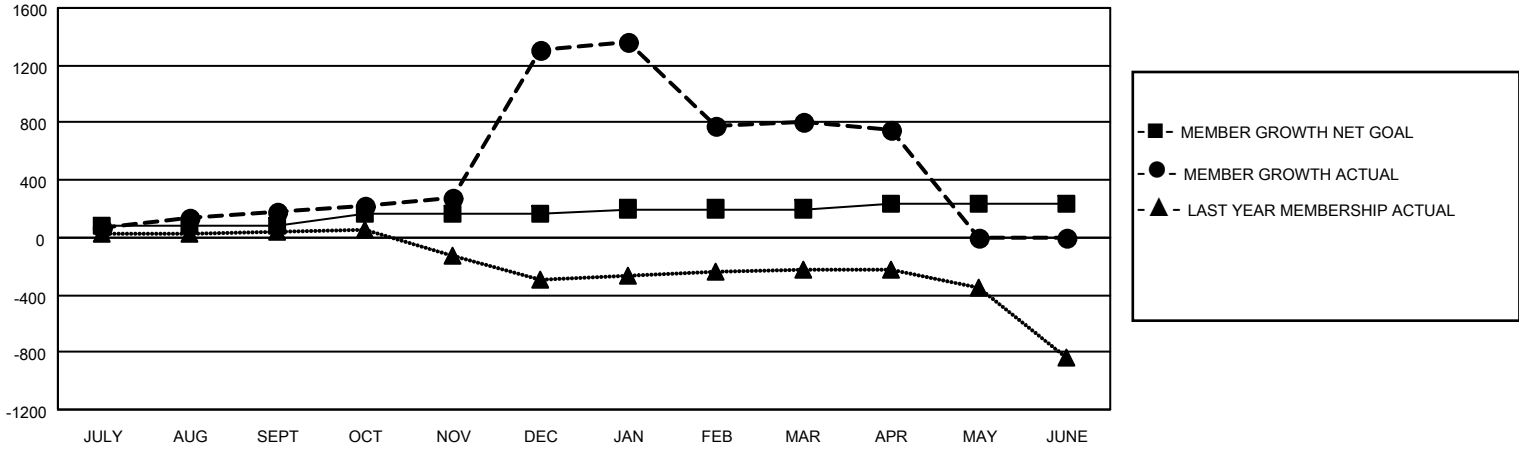
Clubs			
RESULTS FOR 2020-2021			
QUARTER	NEW CLUB GOAL	NEW CLUBS	DROPPED CLUBS
JULY/AUG/SEPT	4	5	3
OCT/NOV/DEC	1	9	0
JAN/FEB/MAR	1	2	25
APR/MAY/JUNE	0	0	0

Members			
RESULTS FOR 2020-2021			
QUARTER	MEMBER GROWTH NET GOAL	MEMBER GROWTH ACTUAL	DROPPED MEMBERS ACTUAL (including transfers)
JULY/AUG/SEPT	80	285	99
OCT/NOV/DEC	80	1542	410
JAN/FEB/MAR	40	448	796
APR/MAY/JUNE	40	6	63

**GOALS AND ACTUAL NEW CLUBS CUMULATIVE**



**GOALS AND ACTUAL MEMBERS CUMULATIVE**



**DROPPED CLUBS: 28**

92 CLUBS OF 151 ADDED 1 OR MORE NEW MEMBERS

**GENDER DISTRIBUTION**

MALE 4,509 (57.85%)  
FEMALE 3,285 (42.15%)

**DROPPED MEMBERS**

[CLICK HERE FOR CUMULATIVE MEMBERSHIP DATA](#)

DECEASED	19
CLUB CANCELLED	608
OTHER	741
<b>TOTAL</b>	<b>1,368</b>

TOTAL FAMILY UNIT MEMBERS	8,041
FAMILY MEMBERS PAYING HALF DUES	4,794